

Establishing a NEW STANDARD in the commercial refrigeration industry.

New generation cooler which integrates technologies that reduce the environmental impact and its carbon footprint.



## KEY FEATURES



### ELECTRONIC TEMPERATURE CONTROLLER

Our controller assures an optimal performance of the cooler, making the product temperature ideal for its consumption.



### ELECTRONIC FAN MOTORS

Electronic fan motors allow better performance, using only a fraction of the energy required by a shaded pole motor.



### ECO-FRIENDLY REFRIGERANTS CO<sub>2</sub>

Alternative refrigeration gases that do not contain HFCs and thus reduce the environmental impact.



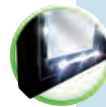
### HIGH EFFICIENCY GLASS DOORS

"Low-e" double panel argon gas filled glass-pack with an extruded insulated plastic frame, making this door the most energy efficient in its category.



### SLIDING DOORS

An alternative for reduced space establishments, its sliding effect keeps doors inside of the cooler cabinet. The internal springs make the doors go back up to the initial position by themselves.



### LED PERIMETER LIGHTING

LED lighting system, uses a portion of the energy of regular fluorescent lights, and need no replacement for seven years.



### CYCLOPENTANE INSULATION

CFC and HFC free Cyclopentane foam is eco-friendly and a high efficiency insulator.

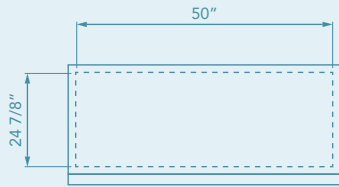


### PLASTIC FRONT GRILL

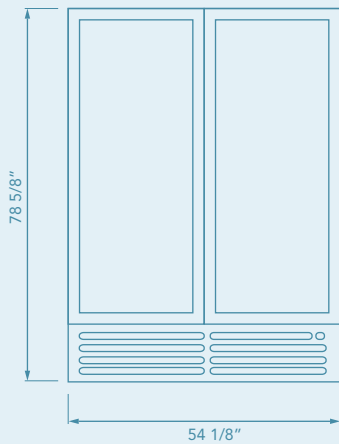
Its differentiated and modern design provides superior impact resistance and is easy to remove for condenser maintenance.



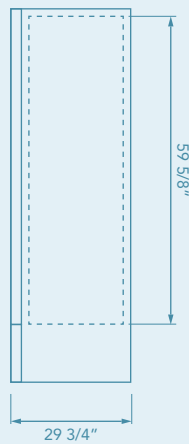
# VRD43<sub>SD</sub> CO<sub>2</sub>



TOP VIEW



FRONT VIEW



SIDE VIEW

## TECHNICAL SPECIFICATIONS

<b>External Dimensions</b>	H:	78 5/8"	1997 mm
	W:	54 1/8"	1375 mm
	D:	29 3/4"	756 mm
<b>Internal Dimensions</b>	H:	59 5/8"	1515 mm
	W:	50"	1270 mm
	D:	24 7/8"	633 mm
<b>Weight</b>	Gross:	466.3 lb	211.5 kg
	Crated:	472.9 lb	214.5 kg
<b>Volume</b>		39.9 ft <sup>3</sup>	1130.1 lts
<b>Capacity</b>	53':		30
<b>Doors</b>		2	
<b>Shelves</b>		10	
<b>20 oz bottle capacity</b>	Total:		560
	Front:		8
	Gravity feed:		560
<b>12 oz can capacity</b>	Total:		1134
	Gravity feed:		560

## REFRIGERATION DATA

<b>Energy Consumption</b> (kWh/24h)	5.461*
<b>Refrigerant R744</b> (kg)	0.390
<b>Compressor</b> (w)	790
<b>Evaporator</b>	Dynamic
<b>Temp range</b>	32°F to 44.6°F

## ELECTRICAL DATA

<b>Amps</b> (A)	9.8
<b>Volts</b> (V)	115
<b>Frequency</b> (Hz)	60
<b>Lighting</b>	LEDs
<b>Cord Length</b>	118" 3000 mm
<b>Plug type</b>	NEMA 5-15P



\* Energy consumption based on ANSI/ASHRAE 72-2005, in its C condition. (Maximum temperature of 90°F and 65% of relative humidity).

BMAD System (Low maintenance high performance).  
Dimensions rounded up to the nearest inch or millimeter.  
Specifications subject to change without notice.



IMBERA USA L.L.C.

245 TownPark Drive Suite 145  
Kennesaw, GA 30144

[www.imberacooling.com](http://www.imberacooling.com)