

GOLD MEDAL 2704-00-000 Cheddar Easy Deluxe Tumbler



GOLD MEDAL 2704-00-000 Cheddar Easy Deluxe Tumbler Instruction Manual

[Home](#) » [GOLD MEDAL](#) » GOLD MEDAL 2704-00-000 Cheddar Easy Deluxe Tumbler Instruction Manual 

Contents

- [1 GOLD MEDAL 2704-00-000 Cheddar Easy Deluxe Tumbler](#)
- [2 SAFETY PRECAUTIONS](#)
- [3 SAFETY PRECAUTIONS \(continued\)](#)
- [4 INSTALLATION INSTRUCTIONS](#)
- [5 Setup](#)
- [6 Electrical Requirements](#)
- [7 Before You Plug In Machine](#)
- [8 OPERATING INSTRUCTIONS](#)
- [9 Care and Cleaning](#)
- [10 MAINTENANCE INSTRUCTIONS](#)
- [11 ORDERING SPARE PARTS](#)
- [12 Safety Labels](#)
- [13 WARRANTY](#)
- [14 Documents / Resources](#)
 - [14.1 References](#)
- [15 Related Posts](#)



GOLD MEDAL 2704-00-000 Cheddar Easy Deluxe Tumbler



SAFETY PRECAUTIONS

DANGER

- Machine must be properly grounded to prevent electrical shock to personnel.
- Failure to do so could result in serious injury, or death.
- DO NOT immerse any part of this equipment in water.
- DO NOT use excessive water when cleaning.
- Keep cord and plug off the ground and away from moisture.
- Always unplug the equipment before cleaning or servicing.
- Make sure all machine switches are in the OFF position before plugging the equipment into the receptacle.

DANGER

Improper installation, adjustment, alteration, service, or maintenance can cause property damage, injury, or death. Any alterations to this equipment will void the warranty and may cause a dangerous condition. This appliance is not intended to be operated by means of an external timer or separate remote-control system. NEVER make alterations to this equipment. Read the Installation, Operating, and Maintenance Instructions thoroughly before installing, servicing, or operating this equipment.

WARNING

ALWAYS wear safety glasses when servicing this equipment.

WARNING

No user serviceable parts inside. Refer servicing to qualified service personnel.

WARNING

Read and understand operator's manual and all other safety instructions before using this equipment. To order copies of the operator's manual go to gmpopcorn.com or write to Gold Medal Products Co., 10700 Medallion Drive, Cincinnati, OH 45241 USA 1-(800)-543-0862

WARNING

DO NOT allow direct contact of this equipment by the public when used in food service locations. Only personnel trained and experienced in the equipment operation may operate this equipment. Carefully read all instructions before operation.

SAFETY PRECAUTIONS (continued)

WARNING

This machine is NOT to be operated by minors.

Note: Improvements are always being made to Gold Medal's equipment. This information may not be the latest available for your purposes. It is critical that you call Gold Medal's Technical Service Department at 1-800-543-0862 for any questions about your machine operations, replacement parts, or any service questions. (Gold Medal Products Co. does not assume any liability for injury due to careless handling and/or reckless operation of this equipment.) General images may be used in manual for reference only

INSTALLATION INSTRUCTIONS

Inspection of Shipment

After unpacking, check thoroughly for any damage which may have occurred in transit. Claims should be filed immediately with the transportation company. The warranty does not cover damage that occurs in transit, or damage caused by abuse, or consequential damage due to the operation of this machine, since it is beyond our control (reference warranty in back of manual).

Manual

Read and understand the operator's manual and all other safety instructions before using this equipment. To order copies of the operator's manual go to gmpopcorn.com or write to Gold Medal Products Co., 10700 Medallion Drive, Cincinnati, OH 45241 USA 1-(800)-543-0862.

Model Description

2704-00-000: Cheddar Easy Deluxe Tumbler, 4 gallon capacity.

Setup

This unit has been tested at the factory.

1. Remove all packaging and tape prior to operation.
2. Place unit on a sturdy, level base for use.
3. Place Blending Pot on rollers for use.
4. After setup, the unit should be cleaned prior to use (see Care and Cleaning section of this manual).

Electrical Requirements

The following power supply must be provided: 2704-00-000: 120 V~, 162 W, 60 Hz

DANGER

Machine must be properly grounded to prevent electrical shock to personnel. Failure to do so could result in serious injury, or death. DO NOT immerse any part of this equipment in water. DO NOT use excessive water when

cleaning.

Keep cord and plug off the ground and away from moisture. Always unplug the equipment before cleaning or servicing. Make sure all machine switches are in the OFF position before plugging the equipment into the receptacle.

A certified electrician must furnish sufficient power for proper machine operation and install any supplied receptacle. We recommend this equipment be on a dedicated and protected circuit. Failure to wire properly will void the warranty and may result in damage to the machine. It is Gold Medal Products Co.'s recommendation that this machine be plugged directly into a wall outlet. The use of extension cords is not recommended due to safety concerns, and may cause sacrificed and/or reduced performance. Make sure cord is located to prevent a trip hazard or unit upset.

Before You Plug In Machine

1. Make sure all machine switches are in the OFF position before plugging the equipment into the receptacle.
2. Make sure the wall outlet can accept the grounded plugs (where applicable) on the power supply cord.
3. The wall outlet must have the proper polarity. If in doubt, have a competent electrician inspect the outlet and correct if necessary.
4. DO NOT use a grounded to un-grounded receptacle adapter (where applicable).
5. Install the unit in a level position.

CAUTION

If the supply cord is damaged, it must be replaced by Gold Medal Products Co., its service agent or similarly qualified persons in order to avoid a hazard.

OPERATING INSTRUCTIONS

Controls and Their Functions



POWER SWITCH

Two position, ON/OFF lighted rocker switch – supplies power to the tumbler drive motor. With this switch in the ON position, the blending pot will continually roll.

Operating Instructions

1. Place the Blending Pot on all the rollers securely (the blending pot has a 4 gallon capacity).

2. Add the product to be mixed to the blending pot.
3. Turn the Power Switch ON and begin tumbling the product.
4. For cheese corn, begin adding cheese mixture until the corn is coated as desired.
5. Turn the Power Switch OFF.
6. Remove the blending pot and empty the contents.
7. Repeat the process for additional product.

Care and Cleaning

DANGER

Machine must be properly grounded to prevent electrical shock to personnel. DO NOT immerse in water. DO NOT clean appliance with a water jet. Always unplug the equipment before cleaning or servicing. Good sanitation practice demands that all food preparation equipment be cleaned regularly (only use non-toxic, food grade cleaners). A clean looking, well-kept machine is one of the best ways of advertising your product.

Follow the directions below to clean and sanitize the unit each day after use.

1. With the machine OFF, unplug the unit before attempting to clean.
2. Make sure to clean all pans and accessories in order to sanitize them before each use.
3. Clean the outside of the unit with a soft cloth, dampened with soap and hot water.
4. Wipe the stainless steel parts with a clean cloth and cleaner designed for stainless steel, such as Gold Medal Watchdog Stainless Cleaner (Item No. 2088).
5. DO NOT use oven cleaners or abrasive materials as they will damage parts of the machine.

MAINTENANCE INSTRUCTIONS

DANGER

Machine must be properly grounded to prevent electrical shock to personnel. Failure to do so could result in serious injury, or death. DO NOT immerse any part of this equipment in water. DO NOT use excessive water when cleaning. Keep cord and plug off the ground and away from moisture. Always unplug the equipment before cleaning or servicing. Make sure all machine switches are in the OFF position before plugging the equipment into the receptacle.

DANGER

Improper installation, adjustment, alteration, service, or maintenance can cause property damage, injury, or death. Any alterations to this equipment will void the warranty and may cause a dangerous condition. This appliance is not intended to be operated by means of an external timer or separate remote-control system. NEVER make alterations to this equipment. Read the Installation, Operating, and Maintenance Instructions thoroughly before installing, servicing, or operating this equipment.

WARNING

No user serviceable parts inside. Refer servicing to qualified service personnel.

CAUTION

THE FOLLOWING SECTIONS OF THIS MANUAL ARE INTENDED ONLY FOR QUALIFIED SERVICE PERSONNEL WHO ARE FAMILIAR WITH ELECTRICAL EQUIPMENT. THESE ARE NOT INTENDED FOR THE OPERATOR.

ORDERING SPARE PARTS

1. Identify the needed part by checking it against the photos, illustrations, and/or parts list. (General images may be used in manual for reference only.)
2. Use only approved replacement parts when servicing this unit.
3. When ordering, please include part number, part name, and quantity needed.
4. Please include your model number, serial number, and date of manufacture (located on the machine nameplate/data plate) with your order.
5. Address all parts orders to:

Parts Department

Gold Medal Products Co.

10700 Medallion Drive

Cincinnati, Ohio 45241-4807

Or, place orders by phone or online

Phone: (800) 543-0862

(513) 769-7676

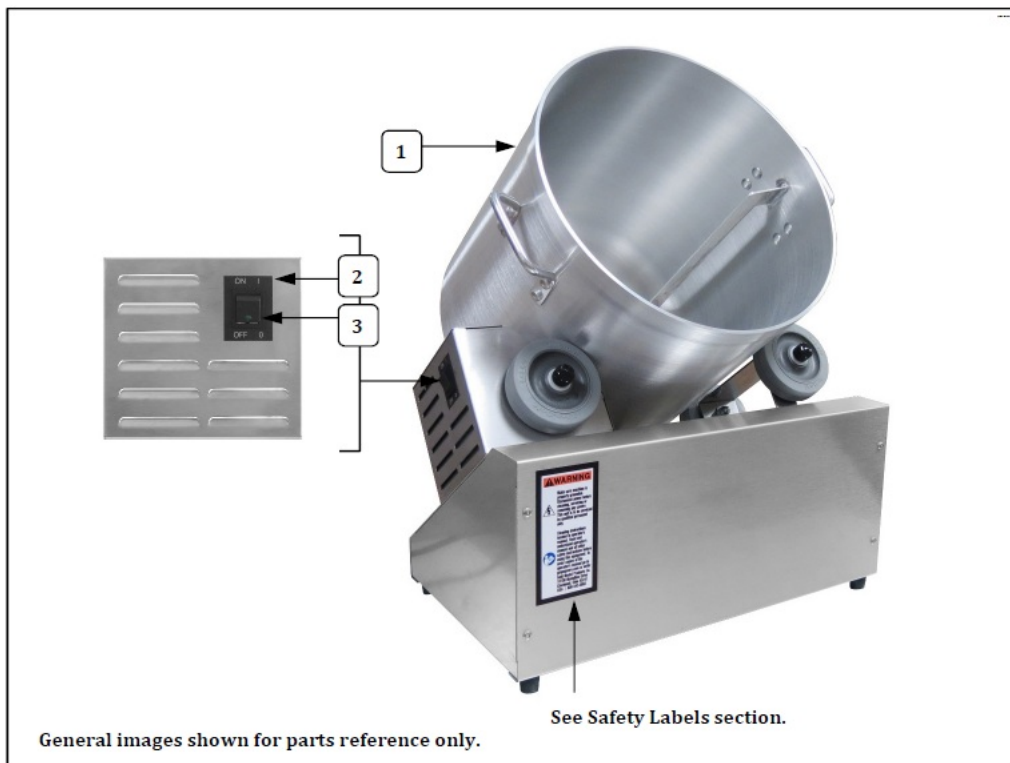
Fax: (800) 542-1496

(513) 769-8500

E-mail: info@gmpopcorn.com

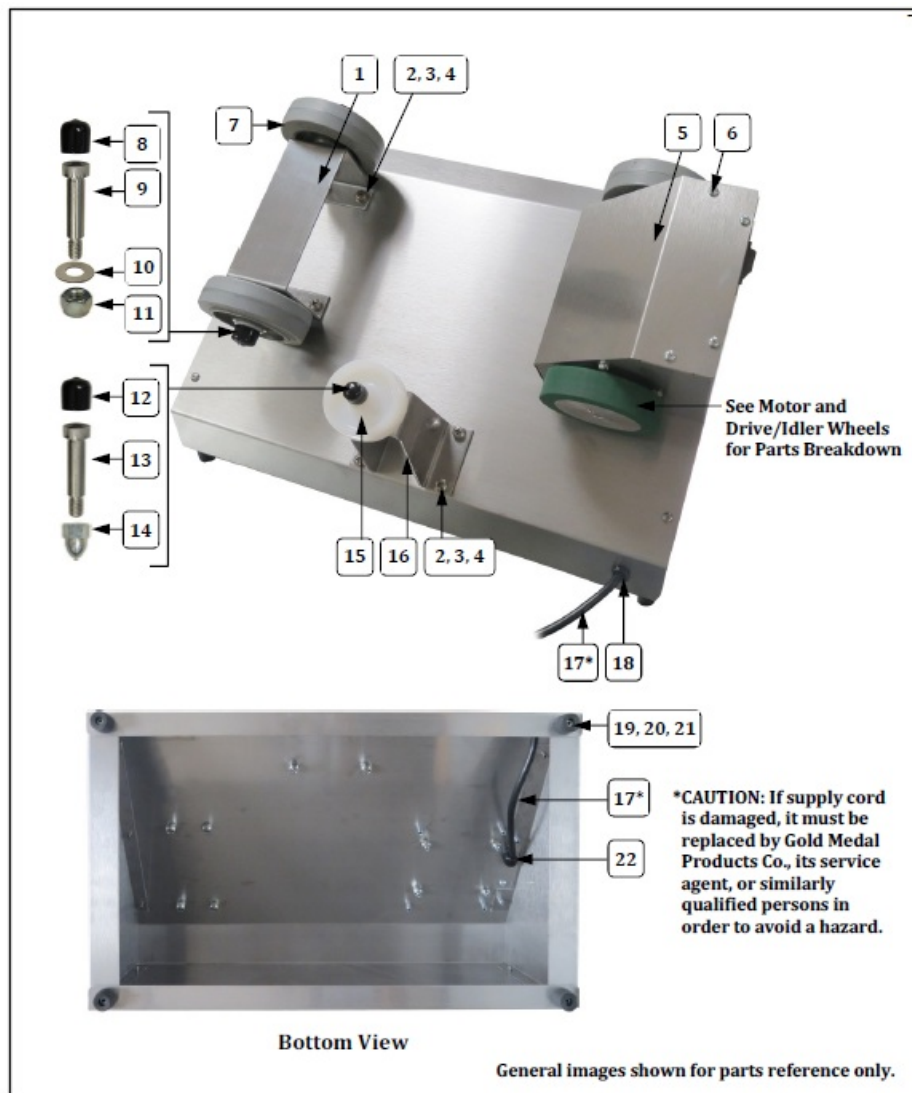
Web Page: gmpopcorn.com

Cabinet Exterior Front and Controls View



Item	Part Description	Part Number
		2704-00-000
1	BLENDING POT WELDMENT	111245
2	ROCKER SW. LABEL ON/OFF	13015
3	SWITCH, LIGHTED ROCKER GR	42798

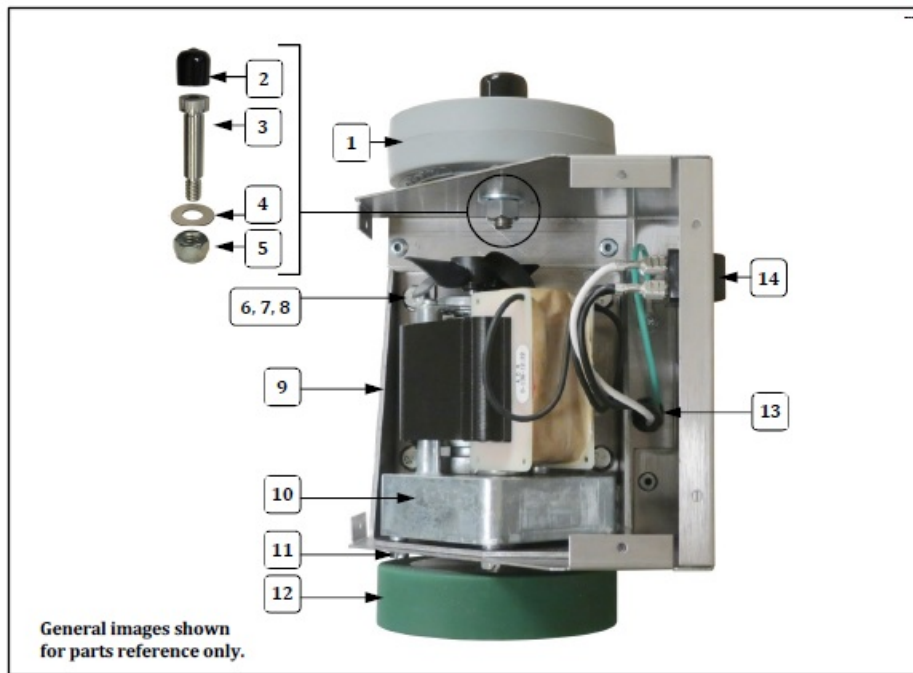
Cabinet Rear and Bottom View – Parts Breakdown



Cabinet Rear and Bottom View – Parts List

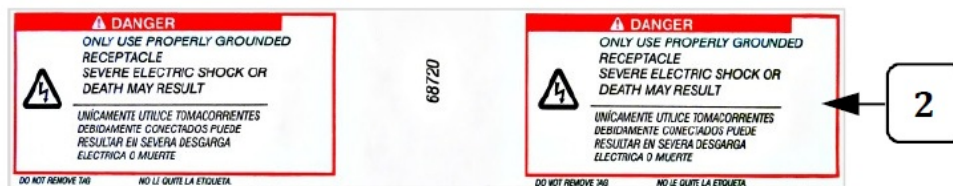
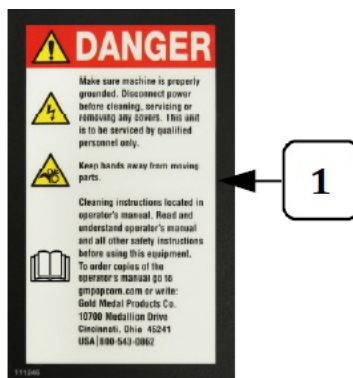
Item	Part Description	Part Number
		2704-00-000
1	ROLLER BRACKET	111239
2	1/4-20 X 5/8 P/H PHIL	12472
3	1/4 FLAT WASHER ST. STL.	42989
4	HEX NUT 1/4-20 ESLOK	42361
5	COVER PLATE	111241
6	SCREW #8-32X3/8 PAN HD PH	74141
7	IDLER WHEEL	17506
8	CAP (3 used – covers Idler Wheel Bolts)	111230
9	1/2"X1-1/2" SHOULDER BOLT	111210
10	3/8" FLAT WASHER, ZINC	111231
11	3/8-16 NYLON LOCKNUT	114032
12	CAP (covers Nylon Wheel bolt)	17784
13	3/8 X 1-1/4 SHOULDER BOLT	17503
14	ACORN NUT 5/16-18	77610
15	NYLON WHEEL	17504
16	IDLER BRACKET	111204
17	LEAD IN CORD	75271
18	STRAIN RELIEF#SR-6N-4	87810
19	RUBBER FEET 3/4IN HIGH	47155
20	8-32 X 1 PH PAN M/S S.S.	12219
21	8-32 SERRATED FLANGE NUT	61151
22	STRAIN RELIEF #SR-10-2	87163

Motor and Drive/Idler Wheels



Item	Part Description	Part Number
		2704-00-000
1	IDLER WHEEL	17506
2	CAP	111230
3	1/2"X1-1/2" SHOULDER BOLT	111210
4	3/8" FLAT WASHER, ZINC	111231
5	3/8-16 NYLON LOCKNUT	114032
6	1/4-20X3/4 LG HEX HD BOLT	13164
7	1/4 FLAT WASHER ST. STL	42989
8	HEX NUT 1/4-20 ESLOK	42361
9	MOTOR MOUNT BRACKET	111238
10	DRIVE MOTOR	17651
11	10-32 X 1 UNSL NON-IND	49376
12	DRIVE WHEEL (includes Set Screw)	111202
13	STRAIN RELIEF #SR-10-2	87163
14	SWITCH, LIGHTED ROCKER GR	42798

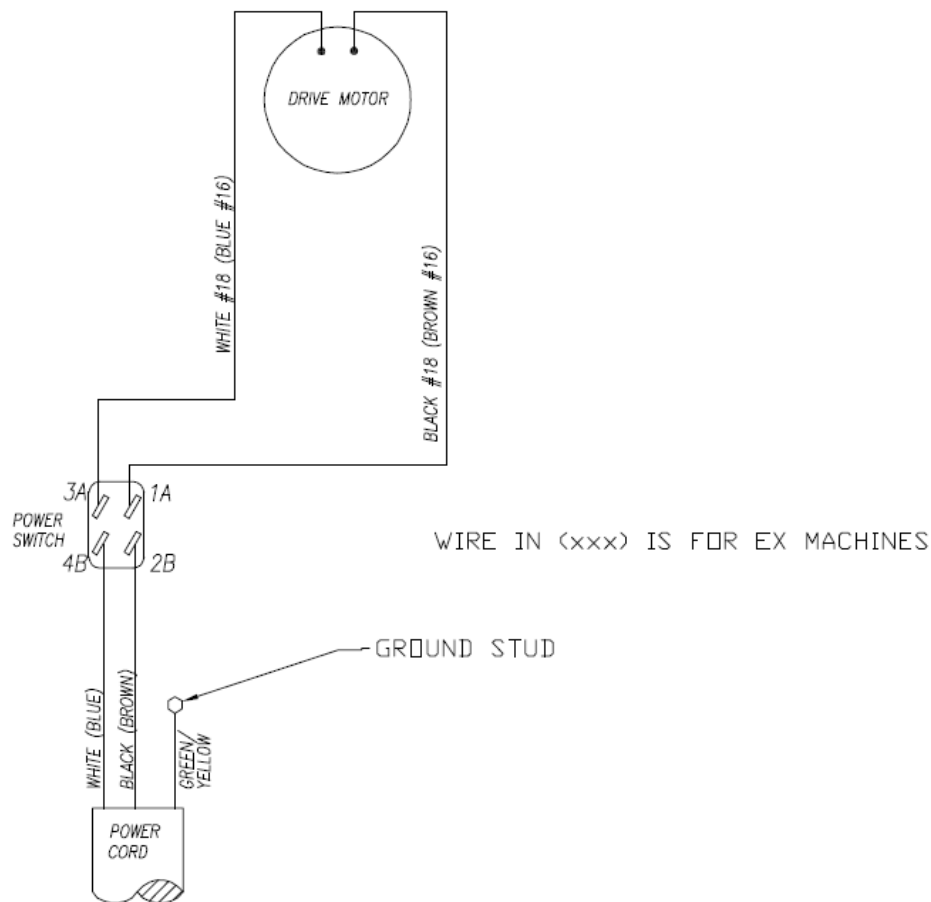
Safety Labels



Item	Part Description	Part Number
		2704-00-000
1	WARNING LABEL	111246
2	WARNING LABEL CORD	68720

Wiring Diagram

Model No. 2704-00-000



WARRANTY

Gold Medal Products Co. warrants to the original purchaser each item of its manufacture to be free of defects in workmanship and material under normal use and service. Gold Medal Products Co.'s obligation under this warranty is limited solely to repairing or replacing parts, f.o.b. Cincinnati, Ohio, which in its judgment are defective in workmanship or material and which are returned, freight prepaid, to its Cincinnati, Ohio factory or other designated point.

Except for "Perishable Parts" on specific machines, the above warranty applies for a period of two (2) years from the date of original sale to the original purchaser of equipment when recommended operating instructions and maintenance procedures have been followed. These are packed with the machine. Parts warranty is two (2) years, labor is six (6) months.

THIS WARRANTY IS IN LIEU OF ALL OTHER WARRANTIES EXPRESSED OR IMPLIED, AND OF ALL OTHER OBLIGATIONS OR LIABILITIES ON OUR PART, INCLUDING THE IMPLIED WARRANTY OF MERCHANTABILITY. THERE ARE NO WARRANTIES WHICH EXTEND BEYOND THE DESCRIPTION ON THE FACE HEREOF.

In no event shall Gold Medal Products Co. be liable for special, incidental or consequential damages. No claim under this warranty will be honored if the equipment covered has been misused, neglected, damaged in transit, or has been tampered with or changed in any way. No claim under this warranty shall be honored in the event that components in the unit at the time of the claim were not supplied or approved by Gold Medal Products Co. This warranty is effective only when electrical items have been properly attached to city utility lines only at proper voltages. This warranty is not transferable without the written consent of Gold Medal Products Co.

The term "Original Purchaser" as used in this warranty shall be deemed to mean that person, firm, association, or corporation who was billed by the GOLD MEDAL PRODUCTS CO., or their authorized distributor for the equipment. THIS WARRANTY HAS NO EFFECT AND IS VOID UNLESS THE ORIGINAL PURCHASER FIRST CALLS GOLD MEDAL PRODUCTS CO. AT 1-800-543-0862 TO DISCUSS WITH OUR SERVICE


REPRESENTATIVE THE EQUIPMENT PROBLEM, AND, IF NECESSARY, FOR INSTRUCTIONS CONCERNING THE REPAIR OR REPLACEMENT OF PARTS.

NOTE

This equipment is manufactured and sold for commercial use only. 10700 Medallion Drive, Cincinnati, Ohio 45241-4807 USA gmpopcorn.com
Phone: (800) 543-0862 Fax: (800) 542-1496 (513) 769-7676 (513) 769-8500

2017 – The text, descriptions, graphics, layout, and other material in this publication are the exclusive property of Gold Medal Products Co. and shall not be used, copied, reproduced, or published in any fashion, including website display, without its express written consent.

Documents / Resources

	<p>GOLD MEDAL 2704-00-000 Cheddar Easy Deluxe Tumbler [pdf] Instruction Manual 2704-00-000 Cheddar Easy Deluxe Tumbler, 2704-00-000, Cheddar Easy Deluxe Tumbler, Easy Deluxe Tumbler, Deluxe Tumbler, Tumbler</p>
--	--

References

-  [Concession Supplies & Equipment | Gold Medal Products Co.](#)
-  [Manual-Hub.com - Free PDF manuals!](#)
- [User Manual](#)

[Manuals+](#), [Privacy Policy](#)

This website is an independent publication and is neither affiliated with nor endorsed by any of the trademark owners. The "Bluetooth®" word mark and logos are registered trademarks owned by Bluetooth SIG, Inc. The "Wi-Fi®" word mark and logos are registered trademarks owned by the Wi-Fi Alliance. Any use of these marks on this website does not imply any affiliation with or endorsement.