



Poly Top Work Table with Backsplash

PWTS-3060BK

Size:	30" D x 60" W x 37" H
Weight	77 lbs
Width	60 inches
Shipping Size	62" L x 31" W x 12" H

Poly Top Work Table with Backsplash, 30"x60"

Features



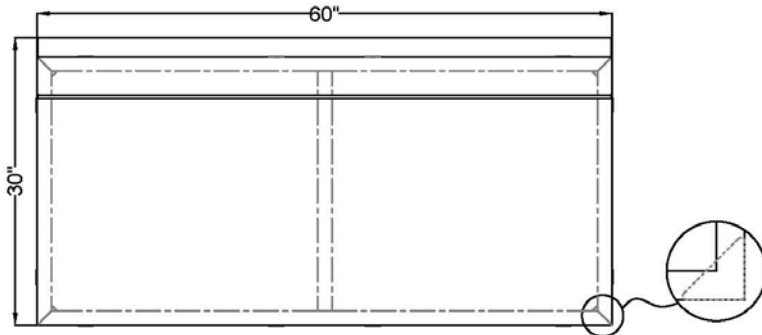
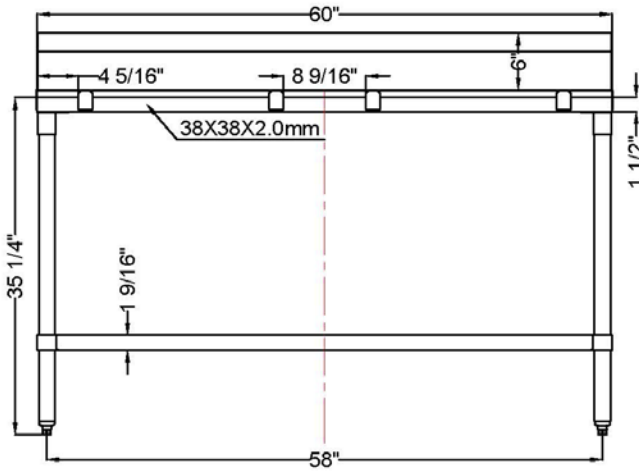
- ✓ Adjustable ABS bullet feet for uneven floors
- ✓ Welded leg gussets for extra strength.
- ✓ Perfect for butchers and commercial kitchens.
- ✓ Stainless steel frame, legs, and under shelf.
- ✓ 6" Stainless steel backsplash.
- ✓ 3/4" Durable poly board.
- ✓ Shipped unassembled to save on cost and space.
- ✓ Welded tabs secure poly board in place.
- ✓ 1 5/8" Tubular 403 stainless steel legs.
- ✓ Removable poly board for easy cleaning.

Poly Top Work Tables

PWTS-3060BK

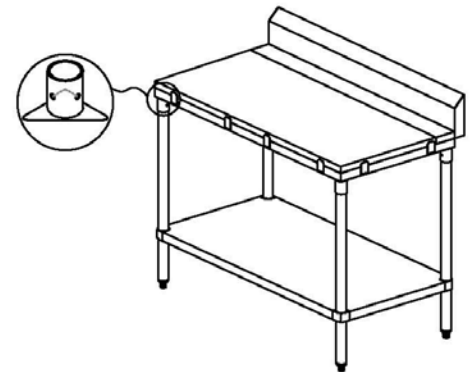
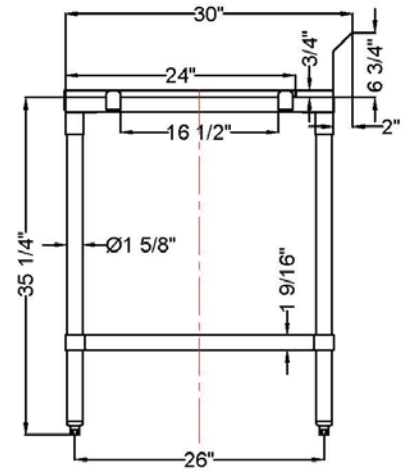
Technical Drawing

FRONT VIEW



TOP VIEW

SIDE VIEW



Model	Shipping Deminsions	Product Size	Width	Weight
PWTS-3048BK	50" L x 31" W x 12" H	30" D x 48" W x 37" H	48 inches	72 lbs
PWTS-3060BK	62" L x 31" W x 12" H	30" D x 60" W x 37" H	60 inches	77 lbs
PWTS-3072BK	74" L x 31" W x 12" H	30" D x 72" W x 37" H	72 inches	82 lbs